



2011 Annual Report



Changing the odds for children and families by providing vision, hope, and strength for a better life through prevention, intervention, and education.



VISION, HOPE, AND STRENGTH FOR A BETTER LIFE

The **Mission** of Center For Family Services is to support and empower individuals, families, and communities to achieve a better life through vision, hope, and strength.

Dear Friends,

Center For Family Services has more than 90 years of experience in providing support to individuals, children, and families in the southern region of New Jersey. With more than 50 programs geared towards empowering individuals and strengthening families, the Center builds brighter futures and stronger communities.

We help vulnerable children and families through innovative programs that make a positive difference in people's lives. The Center provides a full continuum of care to meet our mission providing the best possible opportunity for individuals to achieve a better life. Our services provide the opportunity for obstacles to be overcome and for dreams to be achieved.

In recent years we have seen an increase in the need for services. In order to meet the growing and changing needs of those who live in our community, we have strengthened our current programs, increased our service reach, and launched new initiatives. Some highlights include:

- Expanding our youth residential continuum of care
- Launching new mentoring programs
- Extending our outreach in victim and trauma services
- Engaging partners to support long term community investment
- Supporting families to achieve the goal of self-sufficiency
- Providing a strong support network for families
- Promoting volunteerism and community involvement
- Building capacity to achieve sustainable, measurable results

Children have the right to be safe, nurtured, and encouraged to reach their fullest potential. In order to provide the best possible opportunities for children, our array of services ensures the well being of the entire family. We bring services directly into the homes of at-risk children and families, providing them with the tools and resources to build the foundation for safe, healthy futures.

The **Vision** of Center For Family Services is for all people to lead capable, responsible, fulfilled lives in strong families and healthy communities.

As our breadth of services continues to grow, we are placing a strong focus on evidence-based and model programs that provide practical solutions and enable us to demonstrate positive outcomes. The Center's initiatives strive to energize families, give them confidence, and provide them with a strong support network of services and resources that focus on long-term stability and self-sufficiency. Through our programs, parents are encouraged to achieve their goals and become role models for their children. We are committed to providing high quality, comprehensive services that build on family strengths and change the futures of at-risk children and families.

It is through the combined efforts of our skilled staff, dedicated board of trustees, committed community partners, hundreds of volunteers, and thousands of generous donors that we are able to realize our goals. Your continued investment in our important work enables us to change lives and create bright futures for children and families across southern New Jersey.

Sincerely,

Richard Staglino
President/CEO



John Evans
Board Chair



Our services

Center For Family Services offers a wide range of services dedicated to improving the lives of children and families. Each of our more than 50 programs is designed to ensure that people are able to reach their full potential at every stage of life, from birth to old age. Our service areas include:

Child, Adolescent, and Family

We help to strengthen the capacity of young people and at-risk families to navigate difficult times and make positive choices. Our staff teach critical parenting skills, increase problem solving abilities, decrease high-risk behaviors, and offer counseling and support services. We strengthened over 7,803 children and families last year with these services.

Counseling, Community, and School Based

Our services connect people to the resources they need through statewide and local 24-hour hotlines. We provide individual, group, and family counseling, help low income seniors stay safely in their homes, and conduct child assault and bullying prevention programs in schools. Over 446 people received counseling services, and more than 26,355 people were helped through hotline responses, assault prevention, bullying workshops, and outreach by our teen service learning program.

Safe and Supportive Housing

We provide shelter, security, and support for children who are homeless, runaway, neglected or abused; moms who are homeless with their children; and women escaping domestic violence. Our continuum of care provides children and adults the stable foundation they need to become self-sufficient through temporary shelters, residential treatment centers, transitional living apartments, and the development of permanent affordable housing. Our facilities were a safe, secure home for 1,130 children and adults last year.

Substance Abuse Treatment

We offer substance abuse assessment, treatment, education, and support. These services are available for adolescents, adults, and families, including a specialized program for mothers working to overcome their addictions and maintain or regain custody of their children. Additionally, the Center offers the only program in the state that provides addiction recovery and case management services for the deaf – by the deaf. Over 3,849 people received treatment to overcome their addictions last year alone.

Victim and Trauma Response

We respond to people of all ages who have been the victims of trauma or sexual and domestic violence. Staff provide 24-hour live hotline response; counseling; accompaniments to hospitals, law enforcement and courts; advocacy; and intervention. These services had an impact on the lives of more than 1,497 victims and their families in the last year.

The year in review

37,176 individuals successfully completed one of **56** programs. We provided **16,996** days of shelter to those in need of a safe place to live. **550** employees and more than **500** volunteers worked to fulfill our mission.

Executive Leadership

Richard Stagliano
President/CEO

Sue Bergmann
Vice President, Administration

Tony Comito
*Vice President, Counseling
and Community Services*

Eileen Henderson
*Vice President, Child and
Family Services*

Merilee Rutolo
*Vice President/Head Start
Director*

Andrew Swenson
*Associate Vice President
of Administration/Operations*

Board of Trustees

John Evans
Board Chair

Denise Keyser, Esq.
Vice Chairperson

Ken Shuttleworth
Vice Chairperson

Peter Guzzetti
Treasurer

Eileen Byrne Borland
Secretary

Richard Stagliano
President/CEO

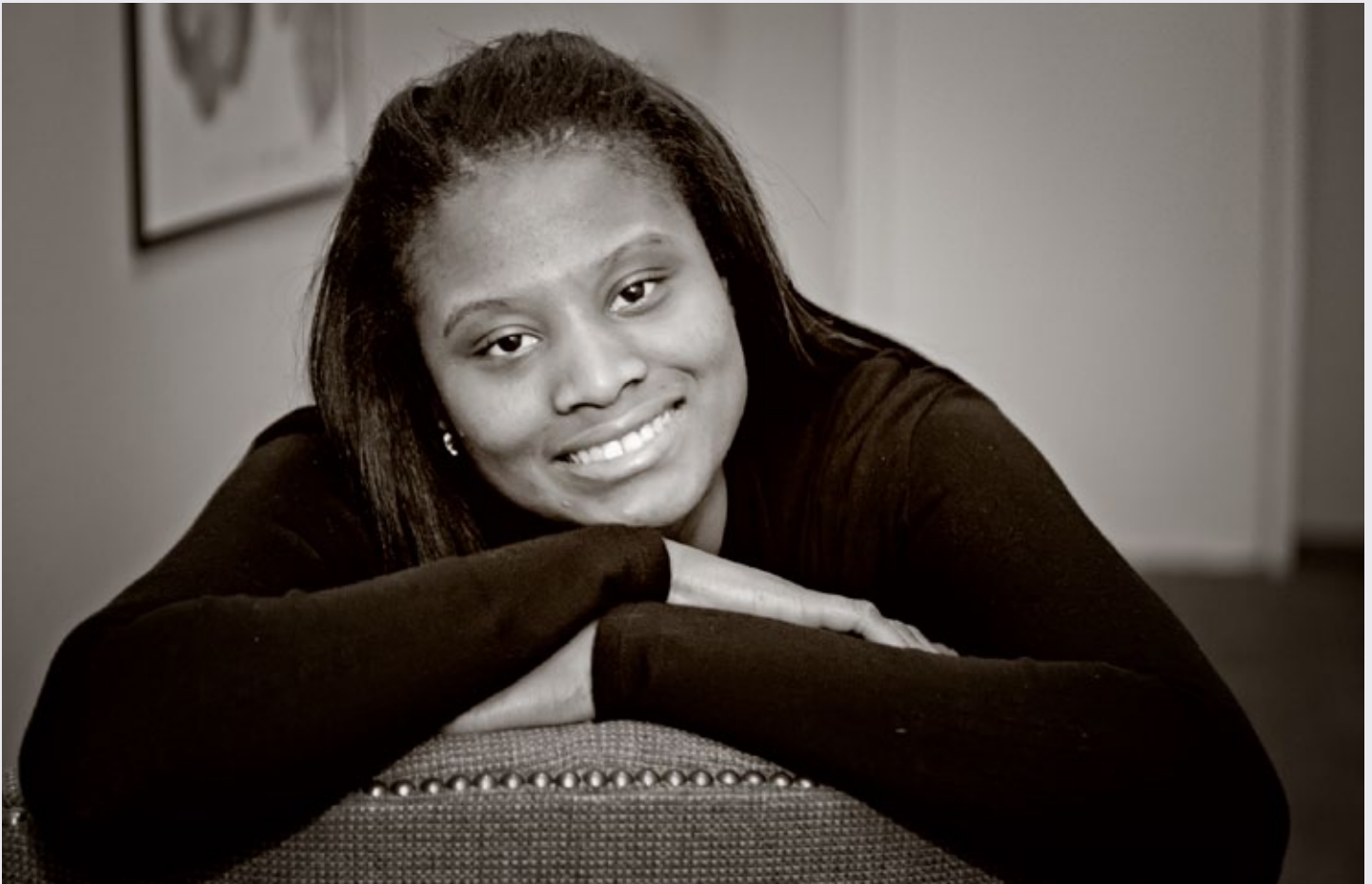
George Beppel, CPA
LaTonya N. Bland, Esq.
Bonnie Bornstein
Evelyn Ginter
Michael Goodman, MD
John A. Jones, Esq.
Deborah Kroop
Michelle Meloy, Ph.D.
Peter Musumeci
Derrick Phillips

A SET OF GOALS ACHIEVED

“I never had a lot growing up,” says Tyisha, a 23-year old resident of Center For Family Services Camden DREAMS program. “I craved independence and success, but knew I had to work hard to achieve them.” Tyisha’s life, like many of the children we serve in our residential programs, began in foster care. Tyisha spent time in foster homes until she eventually found her way to Center For Family Services through the New Jersey Department of Children and Families, Division of Youth and Family Services.

Tyisha was referred to CFS’ GrandSlam program, which provides structured transitional living assistance for homeless female youth with the primary goal of developing an independent living plan. “I wanted to learn how to clean and cook for myself. GrandSlam taught me that and more. It really prepared me for my next step which was moving into Camden DREAMS.”

*“I focused
all of my energy
on education
because I knew
it would prepare me
for my future.”*



Camden DREAMS, another program in the Center's continuum of care, is a permanent supportive housing program for young adults. CFS was provided funding to create this program in 2008 as part of the New Jersey Department of Children and Families' commitment to prioritizing critical resources for children aging out of the foster care system. Because of Camden DREAMS, these young adults now have a place to call home. The program offers wrap-around services to residents while they learn how to set up a savings account, pay bills, and balance school and work all with the help of counselors and resident advisors.

During her three years at Camden DREAMS, Tyisha set goals, and with the help of CFS staff she started to achieve her goals. After graduating high school, Tyisha entered Prism Medical School where after one year she became a licensed medical assistant. "I focused all of my energy on education because I knew it would prepare me for my future."

Tyisha's ultimate career goal was to work at Cooper University Hospital. With the unrelenting help and encouragement of Camden DREAMS staff, she got her wish. Through CFS' Job Readiness Training (JRT) program, Tyisha strengthened her greeting techniques and professional interviewing skills, preparing her for her next step. Tyisha is now a Clinical Medical Assistant in the Surgery Department at Cooper University Hospital.

After a lifetime of being in the foster care system and working her way through CFS' residential programs, Tyisha longed for a place to call her own. "Once I secured my job at Cooper, DREAMS staff started to encourage me to look into buying my own home." In February 2012, Tyisha settled on a brand new condominium located on New Street in Camden City, just around the block from Cooper. She said, "I can't wait to decorate and have friends over to my own place."

Tyisha recently found a written activity she had saved from her time at GrandSlam and realized just how far she had come since becoming a part of Center For Family Services. "The counselors asked us to write down our goals and dreams. I wrote down getting an education, working at Cooper, and owning my own home as part of my future goals. After I settle on my condo I will have reached each and every one of my dreams."

So what's next for this ambitious, spirited 23-year old? "I want to become more engaged in the community and the city of Camden. I was born in this city, I live in this city, and I work in this city. I've done so well because of the resources I've been provided with through Center For Family Services, it inspires me to give back."

Safe and Supportive Housing for Children and Teens

The 11 safe and supportive housing programs offered through Center For Family Services help over 795 children and teens each year. Each program caters to different needs based on the child's history, age, and gender. This continuum strengthens our ability to provide the support for young people to develop a path towards self-sufficiency.

The Center's newest safe and supportive housing program, Tranquility House, focuses on young women age 16-20. The Cape May County based residential home sets the primary goal of developing an independent living plan for each resident.

Our youth residential continuum includes:

- Camden Group Home
- Camden DREAMS
- FAITH (Family Alternatives Intensive Treatment Home)
- GrandSlam
- Helping Hands Foster Care Program
- HomeBase
- IMANI Children's Partial Care
- OASIS Youth Services Program of Cape May County
- Together Youth Shelter
- Tranquility House
- Yes (Youth Empowerment System)

A FOUNDATION FOR SUCCESS



Millisha was determined to provide for her family and be a positive role model for her three children. As a young mother without any work experience, the Center's Camden County TANF Initiative for Parents (TIP) program provided Millisha with the opportunity and support to set her family's future on a positive path.

TIP provides parenting skills, education, and welfare-to-work support to expectant women and new mothers with a baby under the age of one. Program goals include providing the tools, education, and community resources to stabilize families, ensure the safety and well-being of children, and promote self-sufficiency.

The TIP program is an important component in CFS' pipeline of comprehensive services that keep children and families safe and healthy. Moms are taught real-life parenting skills in daily workshops with a focus on healthy child development. They also receive support for continuing education and gaining employment.

For moms like Millisha, the program provides the individualized help they need most, either in their homes, in the community, or both. These varied program options allow a mom to access the resources and supports she needs to achieve self-sufficiency and to create a better life for herself and her children.

The TIP program connected Millisha to community resources and information, giving her the ability to improve her life. Millisha gained a better understanding of her parenting responsibilities. She attended workshops on budgeting, nutrition, job interview skills, and goal-setting.

TIP Counselors encouraged Millisha to complete her Certified Nurse Assistant (CNA) training. "The counselors encouraged me not to hold back. They pushed me to attend the CNA classes."

After graduating from the TIP program, Millisha continued with her CNA coursework. Just days after her studies were complete, she was hired by Medford Care as a Certified Nurse Assistant.

"Now I am employed, and I can provide for my children. We no longer have to depend on other people," says Millisha. The future is bright for this high-energy mom raising three happy children.

"Because of Center For Family Services, I am now a role model for other moms. I still visit TIP and talk to the girls in the program. I tell them if they make a plan and strive for it, they will get it."

"This program helped me become a great mother and I feel good about being a positive role model for my three children."



OUTREACH, ADVOCACY, AND SOCIAL CHANGE

It is no secret that sexual and domestic violence are rising epidemics. New reports show that one in four women is a victim of domestic violence, and every 2 minutes someone in the United States is the victim of sexual assault. These crimes are a national problem and know no race, color, gender, or age. Victims deserve competent, compassionate, and comprehensive care.



The Center's Services Empowering Rights of Victims (SERV) program is at the forefront of these issues, focusing their work on empowering victims to become survivors and promoting awareness and prevention across the southern New Jersey community. SERV provides crisis intervention, counseling, and advocacy to male and female victims of sexual and domestic violence. Trained advocates respond to hotline calls 24/7 to provide immediate support to individuals in crisis. All services are free, confidential, culturally sensitive, and bilingual.

The battle against sexual and domestic violence in southern New Jersey can't be fought alone. Through established relationships, Center For Family Services and the county prosecutor's offices partner with seven hospitals in the tri-county region, including Cooper University Hospital and Virtua Camden County, which are designated Sexual Assault Nurse Examiner (SANE) sites. Following an assault, the team is activated in a coordinated effort to provide services that are sensitive, dignified, and victim-centered. This approach provides a support network for the victim and contributes greatly to the overall healing process.

The Center's work in victim and trauma response does not stop with crisis intervention, counseling, and advocacy. With approximately 3.3 million children witnessing domestic violence occurrences in their homes each year, prevention is as much a part of our work as supporting victims. The trauma children experience in an abusive home can show up in emotional, behavioral, social, and physical disturbances that affect their development and can continue into adulthood. It is proven that a child's exposure to domestic violence is the strongest risk factor for transmitting violent behavior from one generation to the next.

As part of CFS' continuum of care, children and families may be referred to Peace: A Learned Solution (PALS), a CFS evidence-based program uniquely designed to offer therapeutic services to children who have resided in homes where domestic violence has been present. The program uses talk, play, art, music, dance, and movement therapies to assist in the families healing and break the cycle of victimization.

With the help of dedicated staff spanning three counties, a tri-county prevention coalition, and more than 500 volunteers, Center For Family Services is the leader in an important effort to change the environment that contributes to sexual and domestic violence, to alter attitudes and behaviors before they can lead to victimization, and to educate the community on how they can play a role in stopping sexual violence.

SERV Expansion

Center For Family Services expanded domestic violence services in early 2011 to include Cumberland County.

“This expansion in services allows us to provide outreach to more individuals in need of critical services. Center For Family Services is committed to addressing the immediate and long-term needs of survivors, and we are dedicated to promoting awareness and prevention in an effort to encourage healthy attitudes and violence-free communities.”
- Richard Stagliano, President/CEO

The Center’s SERV program is the New Jersey State Designated:

- Sexual Violence Provider in Camden, Gloucester, and Cumberland Counties
- Domestic Violence Provider in Gloucester and Cumberland Counties



A FOCUS ON STRENGTHENING COMMUNITIES

At Center For Family Services our initiatives and programs provide families with the tools, resources, and supports to build positive futures. We work to ensure all children are safe, healthy, and have every opportunity to reach their full potential. With a focus on prevention, our comprehensive network of services improves lives and strengthens a family's ability to achieve self-sufficiency. With investment from our partner organizations and support from our generous donors and volunteers, we are able to achieve our mission.



Family Success Center

Through funding from the New Jersey Department of Children and Families and in collaboration with the Community Planning and Advocacy Council (CPAC), Center For Family Services provides protective resources for Camden County families at the Clementon Family Success Center. This neighborhood gathering place has essentially become a home to the community it serves.

From its monthly Thursday night Family Dinners, where everyone is invited, to its Book Club and Cooking Workshops, the Family Success Center is a place for those in need and those wanting to give back. With the help of dedicated staff and community volunteers, the Family Success Center makes individuals and families feel safe, comfortable, and most importantly, right at home providing a support network that includes:

- A Clothing Closet, a free community thrift store that operates during their normal business hours providing much needed essentials to children and families
- Life skills training and employment resources
- Connection to crisis and family counseling
- Access to health services
- Monthly food pantry distributions
- Daily events that promote family health and safety
- A back-to-school community wide event that promotes learning success

Camden Cooper Lanning Promise Neighborhood

With the support from strong community partnerships and a dedicated volunteer network, CFS is laying the groundwork for a fundamental change in a Camden City neighborhood. The Camden Cooper Lanning Promise Neighborhood (CCLPN) initiative is led by CFS, in collaboration with: Rowan University, Cooper University Hospital, the City of Camden, Cooper Lanning Civic Association, Lanning Square West Residents in Action, Lanning Square Family School, and a team of organizations, community representatives, and volunteers.

This collaborative effort, based on the Harlem Children's Zone model, seeks to enrich the lives of the children and families in the Camden Cooper Lanning neighborhood from cradle to college to career. The Promise Neighborhood team of partners is developing a coordinated pipeline of comprehensive programs to ensure continuous services for families, so that children have every opportunity to be successful. As plans develop for outcomes driven programs that maximize educational achievements for children, many positive programs are already in motion including:

- Monthly Reading Blitzes, hosted by American Reading Company
- Saturday afternoon mentoring sessions hosted by CFS' Quixote Quest "Qrew's Nest" teen volunteers
- An after school and summer program provided by Urban Promise
- Health Screenings, flu shots, and a summer reading program provided by Cooper University Hospital
- Eye care provided by South Jersey Eye Center
- Two-week summer enrichment program provided by Rowan University Urban Teacher Academy (RUTA)

Community Support

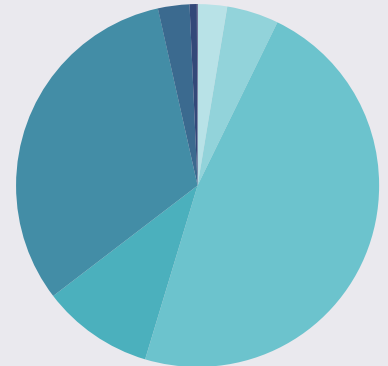
- Through the annual Comcast Cares Day, more than 50 volunteers planted trees, shrubs, and flowers, and completed the groundwork for a summer vegetable garden for children at the Center's Together Youth Shelter in Glassboro, NJ.
- During the annual Campbell's Make a Difference Week, more than 1,000 boxes of food were delivered to Camden City families in our programs.
- Generous donations of baby shower items allowed us to provide new mothers with necessities for newborns.
- Donations of pajamas from the Pajama Program and books from Barnes & Noble customers ensured that more than 1,500 children had warm pjs and a book to read at bedtime.
- Operation Backpack sponsored by the Promenade at Sagemore, Courier Post, Susquehanna Bank, Cherry Hill Mall, and the United Way enabled more than 8,000 children to start the school year prepared for success
- The Holiday Gift Project donors provided holiday gifts to more than 2,300 children inspiring hope for a brighter future.



FINANCIAL REPORT 2010-2011

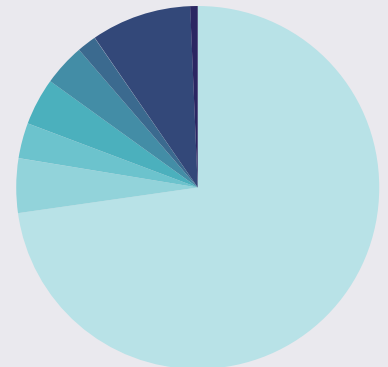
REVENUE

Federal Grants.....	650,088	3%	
American Recovery & Reinv. Act.....	1,146,325	5%	
State of NJ Grants.....	11,788,556	47%	
County and City Grants.....	2,474,556	10%	
Fees and Insurance Reimbursements.....	7,920,967	31%	
Other Grants and Donations.....	697,607	3%	
United Way.....	161,515	1%	
Investment Income.....	17,850	0%	
Total.....	\$24,857,464	100%	



EXPENSES

Personnel.....	18,155,768	73%	
Consultants and Professional Fees.....	1,209,433	5%	
Materials and Supplies.....	785,159	3%	
Facility Costs.....	1,048,284	4%	
Assistance to Clients.....	932,575	4%	
Sub-grantees.....	428,463	2%	
Other Expenses.....	2,229,132	9%	
Equipment and Capital Expenses.....	167,228	0%	
Total.....	\$24,956,042	100%	



STATEMENT OF FINANCIAL POSITION - JUNE 30, 2011

ASSETS

CURRENT ASSETS

Cash and Cash Equivalents.....	1,318,125
Accounts Receivable.....	3,256,433
Available for Sale Securities - Fair Value.....	261,484
Prepaid Expenses/Deposits.....	319,349
Total Current Assets.....	\$5,155,391

PROPERTY AND EQUIPMENT

Buildings, Improvements, and Equipment.....	13,563,907
Less: Accumulated Depreciation.....	-4,542,137
Net Property and Equipment.....	9,021,770

OTHER ASSETS

Other Assets.....	167,959
-------------------	---------

TOTAL ASSETS

Total Assets.....	\$14,345,120
-------------------	--------------

LIABILITIES AND NET ASSETS

CURRENT LIABILITIES

Accounts Payable and Accrued Expenses.....	821,865
Current Portion of Notes Payable.....	226,303
Accrued Payroll, Payroll Taxes, and Benefits.....	573,513
Accrued Vacation.....	395,827
Deferred Grant Revenue.....	130,385
Contract Reimbursements Payable.....	585,418
Other Current Liabilities.....	7,960
Total Current Liabilities.....	\$2,741,271

LONG TERM LIABILITIES

Long-term Portion of Notes Payable.....	5,417,774
Total Long-Term Liabilities.....	\$5,417,774

NET ASSETS

Unrestricted.....	6,059,075
Temporarily Restricted.....	127,000
Total Net Assets.....	6,186,075
Total Liabilities and Net Assets.....	\$14,345,120

FUNDERS

FEDERAL

US Department of Health & Human Services
US Department of Agriculture
US Department of Housing & Urban Development
US Department of Justice

NEW JERSEY STATE

Department of Children & Families
Department of Community Affairs
Department of Corrections
Department of Education
Department of Health & Senior Services
Department of Human Services
Department of Law & Public Safety

CAMDEN COUNTY

Board of Chosen Freeholders
Camden County Prosecutor's Office
Youth Services Commission

CAPE MAY COUNTY

Board of Chosen Freeholders

GLOUCESTER COUNTY

Board of Chosen Freeholders
Gloucester County Prosecutor's Office
Youth Services Commission

UNITED WAYS

United Way of Camden County
United Way of Gloucester County

OTHER

Camden City Board of Education
Community Planning & Advocacy Council (CPAC)
Education, Information & Resource Center (EIRC)
NJ Association on Correction
NJ Coalition Against Sexual Assault
NJ Coalition for Battered Women

FOUNDATIONS

Annie E. Casey Foundation
The Beneficial Foundation
The Bunbury Company
Camden Home for Children & SPCC
Campbell Soup Foundation
The Comcast Foundation
The Cooper Foundation
The Danellie Foundation
Delaware River & Bay Authority
The Domenica Foundation
The Gannett Foundation
The Mary Kay Foundation
The Musumeci Family Foundation
The Nicholson Foundation
Payless Gives
Prudential Foundation
William G. Rohrer Charitable Foundation

South Jersey Industries
Susquehanna Bank
The Target Corporate Community Relations
TD Charitable Foundation
The Wal-Mart Foundation
Valero Energy Foundation
Verizon Foundation

FOUNDER (\$10,000 & up)

Peter M. Musumeci, Jr. & Linda M. Musumeci
Sovereign Military Order of Malta
Wyanoke Children's Support Fund

SPONSOR (\$5000 - \$9999)

Anonymous
Ann Hsu Memorial Fund
Ballard, Spahr, Andrews, & Ingersoll
Susquehanna Bank

GUARDIAN (\$2500 - \$4999)

Benefit Concepts
Mr. Anthony Comito
Mr. George Beppel
Cherry Hill Mall
Comcast
Dr. & Mrs. Howard Kroop
Mr. & Mrs. Ken Manny
Mr. Joseph Mckernan, Jr.
TD Bank

BENEFACTOR (\$1000 - \$2499)

Ms. Bonnie Bornstein
Brown & Brown of Lehigh Valley
Camden Catholic High School
Capehart & Scatchard
Dewlare Community Foundation
Gloucester County Special Services School District
Holman Automotive
Mr. & Mrs. Robert Keyser
Kohl's
Men of Moorestown
PSE&G
Quixote Quest
Rowan University
Rizzieri Salon & Spa
Ms. Terry Scalella
Toyota-Scion of Turnersville
Mr. & Mrs. Steven Selfridge
Mr. & Mrs. Paul Stagliano
UMDNJ School of Osteopathic Medicine

LEADER (\$500 - \$999)

The Bank
Bill Chambers Sheet Metal
Mr. Robert Blass
Cherokee High School Boys Lacrosse Team
Mr. & Mrs. John Evans
Mr. & Mrs. Anthony Fiola
Gloucester Township Democratic Party
Mr. Joseph Gunn
Mr. Peter Guzzetti
Mr. & Mrs. Robert Hendersen
Ms. Nancy Micale

Kemble Memorial Methodist Church

Mr. & Mrs. Rich McGee
Ms. Rose Musumeci
Ms. Sarah Musumeci
Ms. Amirtha Naadimuthu
Ms. Jeanette Picone
Office Products
Pennygreen
Qualty Asset Recovery
Mutual of America
Mr. Derrick Phillips
Mr. Jared Soble
Ms. Christine Slachta
South Jersey Industries
Mr. & Mrs. Richard Stagliano
The Standard
Mr. Steve Swetsky
Mr. Fran Witt

PATRON (\$250 - \$499)

Abbey Carpet of Woodbury
Mr. Randolph Angermann
Atlantic City Electric
Auto Lenders
Mr. & Mrs. Dan Bark
Ms. LaTonya Bland
Ms. Eileen Byrne Borland
Ms. Lisa Bosley
Burns, Egan, Byrne
Ms. Sharon Ceravolo
Cherry Hill Imports
Colonial Manor United Methodist Church
Competitive Heating & Air Conditioning, Inc.
Ms. Karen Deacon
Dr. Donald Farish
Gateway Regional High School
Ms. Jill Gilfillan
Ikon Office Solutions
Mr. & Mrs. John Jones
Kimberly - Clark Corporation
Gary Koopman
Ms. Louise Marzin
Mafo Worldwide
Ms. Catherine McClendon
Mister Softee
Netcarrier
Parkview Elementary
Mr. & Mrs. Bruce Paporone
Mr. & Mrs. Guy Pipitone
The Promenade at Sagamore
Mr. James Putman
Rizzieri Aveda Salon School
Mr. & Mrs. Greg Rutolo
Mr. & Mrs. Henry Rose
Ms. Madeleine Schachter & Mr. David Stagliano
Sea Gull Lighting
Mr. & Mrs. Andrew Segrave-Primus
Mr. & Mrs. John Sheppard
Mrs. Yola Stagliano
Mr. & Mrs. Douglas Stiglich

FRIEND (\$100 - \$249)

Action Plumbing
Ms. Donna Adair
Ms. Joan Alpert
Mr. & Mrs. Richard Bellamente
Mr. & Mrs. Seth Bergmann

Ms. Karen Boucher
Mr. & Mrs. Richard Brant
Ms. Sheena Broume
Campbell Soup Company
Ms. Lois Chapman
Ms. Cindy Cipriani
Colonial Park Senior Citizens Club
Mr. & Mrs. Richard Dantonio
DiCarlo Distributors
Dwight D. Eisenhower Middle School
Mr. Gerald Faller
Ms. Angela Freas
Ms. Sharyn Fooks
GFWC Woman's Club of West Deptford
Mr. Darryl Gilbert
Ms. Persel Gilliam
Dr. & Mrs. Salvatore Girardo
Gloucester County Dept of Human Services DOT
Mr. & Mrs. William Goodrich
Ms. Louisa Gordon
Ms. Coleen Gormley
Holy Trinity Episcopal Church
Joey's Boutique
John F. Kennedy Memorial School
Mr. Harold Johnson
Johnson Electronic Services
Kemble Memorial Methodist Church
Mr. & Mrs. David Kerr
Ms. Ruth Keser
Mr. & Mrs. Ronald Kyle
La Brea Bakery
Ms. Barbara Lampplugh
Ms. Louise Marzin
Mr. & Mrs. Thomas Mannion
Mr. & Mrs. James Meadows
Memorial Presbyterian Church
Ms. Kim Moon
Ms. Audie Murphy
Mrs. Mary LaRosa Musumeci
Ms. Kerry Naughton
Mr. & Mrs. William Nickerson
Ms. Paula Pennisi
Phoenix Heating & Air
Ms. Donna Pinto
Mr. & Mrs. Daniel Ragone
Ms. Nicole Ray
Mr. & Mrs. Kimberly & Tim Rice
Ms. Marilyn Rivell
The Rosen Family
Samaritan Hospice
Service Master
Mr. & Mrs. Ken Shuttleworth
Mrs. Karen Skelding
Ms. Dorothy Slack
Dr. Joseph Sokolowski
South Jersey Welding
Mr. Andrew Swenson
Sysco Philadelphia
Mr. & Mrs. John Taima
Ms. Carol Anne Visalli
Ms. Christin Veit
Ms. Joanne Walko
Ms. Megan Williamson
Ms. Sonia Wilson
Zion United Methodist Church

SUPPORTER (\$50 - \$99)

5 one 7 Designs
Mr. & Mrs. Anthony Alberto
Ms. Margaret Anton
Apple Physical Therapy
Mr. & Mrs. Charles Bailey
Ms. Karen Baker
Ms. Marianne Baker
Ms. Robin Baker
Ms. Susan Baker
Ms. Purnima Baner
Ms. Lauren Benatti
Mr. Bernie Robbins
Ms. Shonell Best
Mr. Michael Brewer
Mr. & Mrs. Philip Brockington
Ms. Holly Caccia
Ms. Jean Carr
Ms. Alice Cessna
CH Robinson Company
Consulting Engineer Services
Mr. & Mrs. Robert Corson
Mr. & Mrs. Joseph Curry, Jr.
Ms. Erica Dush
Exit Realty Tri-State Group
Ms. Jessica Fisher
Mr. & Mrs. John Fletcher
Mr. & Mrs. Richard Floreck
Ms. Evelyn Ginter
Mr. Steve Holt
Johnson Electronic Services
Ms. Peggy Koen
Ms. Maureen Lex
Ms. Barbara Lilley
Mr. & Mrs. Howard McClarnon
Ms. Angela McDonough
Ms. Holly McGill
Mental Health Association
Southwestern NJ
Mr. John Monaghan
Ms. Jessica Morgan
Mr. John Murray
Mr. & Mrs. Anthony Musumeci
One Stop
Ms. Eleanor Oxley
Mr. & Mrs. Louis Pantalone
Mr. & Mrs. Dave Paul
Ms. Maureen Petraghani
Mr. & Mrs. Robert Provencher
Ms. Kate Putnam
Ms. Noel Quigley
Mr. Kevin Rehmann
Mrs. JoAnn Reynolds
Mr. Harvey Rovinsky
Ms. Catherine Rovito
Ms. Rosemary Schaab
Ms. Debra Sellitto
Mr. Ken Siegel
Ms. Laurie Smith
Ms. Nicole Snyder
South Jersey Quilters Guild
Swisco, Inc.
Thomas E. Edison Elementary School
Ms. Lisa Walters

CONTRIBUTOR (\$25 - \$49)

Mr. & Mrs. Robert Banschler
Ms. Kathryn Bird
Borough of Glassboro
Mr. & Mrs. Gerald Burke

Camden Empowerment Corporation
Mr. & Mrs. Joseph Cashore
Conifer Realty, LLC
Mr. & Mrs. Samuel Duklewski
Ms. Carol Erlam
Ms. Sharon Feery
Mr. Brian Fischer
Dr. & Mrs. Bruce Gooberman
Janine, David, & Kathleen Graham
Ms. Martha Havens
Mr. & Mrs. Charles Jansky
Ms. Theresa Klinger
Ms. Pati Krasensky
Mr. Matthew Kuehn
LL Bean
Ms. Arlene Lloyd
Dr. & Mrs. John Lore
Ms. Hazel Marinelli
Ms. Carley Markel
Mr. & Mrs. Joseph McFadden
Mr. & Mrs. Kenneth Miller
Ms. Linda Miller
Ms. Rebecca Mollis
Mr. & Mrs. Donald Munson
Ms. Mary Myers
Mr. & Mrs. Joseph Oriti
Ms. Carol Parent
Ms. Joan Pearce
Ms. Adrienne Pipitone
Ms. Peter Sciotto
Ms. Denise Rosen
Mr. Wali Rushdan
Mr. Peter Sciotto
Ms. June Siegel
Ms. Alfina Smith
Ms. Donna Stemberger
Mr. & Mrs. James Twitchell
Mr. Barry Wartenberg
Mr. & Mrs. Thomas Weber
Ms. Lisa Weinstein
Ms. Joan Weiss
Ms. Rosemarie Weiss
Ms. Carol Woodward
World Events Inc.
Mr. & Mrs. Joseph Zeno

WYANOKE CHILDREN'S SUPPORT FUND

DONORS

Mr. Joseph Anzuena
Ms. Mary Beth Aveni
Mr. John Bond
Ms. Robin Dellolio
Ms. Suzanne Demarest
Ms. Christina Deno
Ms. Kathleen Huntley
Mr. John Kain
Mr. Peter Slack
Employees of Wyanoke Group

FUNDERS

DENIM DAY

DONORS

Rowan University
Ms. Ann Adams
Ann Hsu Memorial Fund
Mr. & Mrs. William Anzalone
Apple Physical Therapy
Ms. Cathy Archer-Miller
Mr. & Mrs. Jose Baez
Ballard Spahr
Ms. Danielle Barrila
Mr. & Mrs. Bruce Bassett
Ms. Kris Beers
Mr. & Mrs. Kenneth Behrns
Mr. & Mrs. Robert Bennett
Ms. Donna Bernath
Ms. Deena Betze
Mr. & Mrs. Gerald Bianchi, Jr.
Ms. Gina Blevins
Borger, Jones, Matez & Kelley-Cain P.A.
Ms. Bonnie Bornstein
Borough of Glassboro
Ms. Dina Bottley
Mr. & Mrs. Daniel Boucot
Mr. & Mrs. John Brecht
Mr. & Mrs. Melinda Brokenshire
Ms. Anna Brudnicka
Ms. Casey Burns
Mr. Joseph Caffrey
Camden Catholic High School
Camden Empowerment Corporation
Campbell Soup Company
Ms. Jean Carr
CH Robinson Company
Cherry Hill Mall
Ms. Barbara Cheston
Mr. & Mrs. Frank Chobert, Jr.
Ms. Christina Christy
Ms. Louise Colletta
Mr. Anthony Comito
Conifer Realty, LLC
Ms. Edie Conover
Consulting Engineer Services
Mr. & Mrs. Gary Cop
Ms. Zamora Court
Ms. Janet Covici
Ms. Melissa Coyle
Ms. Bonnie Dasher
Mr. Anthony Davis
Ms. Heather Delia
Ms. Karrie Dementri
Ms. Danielle Depper
Mr. & Mrs. Charles Dermond
Mr. & Mrs. Michael Dipaolo, Jr.
Ms. Dawn Donaghy
Mr. & Mrs. Ronald Donato
Mr. Adam Driscoll
Mr. & Mrs. Samuel Duklewski
Dwight D. Eisenhower Middle School
Ms. Virginia Emerson
Ms. Carol Fagundus
Feminique Boutique
Mr. & Mrs. Edward Finnegan
Miss Lyn Fithian
Dr. Leo Forsberg Jr.
Mr. & Mrs. David Franklin
Ms. Kim Gadzinski
Gateway Regional High School

Ms. Bernadette Geddes
Ms. Nicole Gee
Ms. Maegen Gibb
Mr. & Mrs. Jai Gilliams
Ms. Kim Glazer
Gloucester County Department of Human Services - Division of Transportation
Gloucester County Special Services School District
Mr. & Mrs. Adam Goff
Ms. Merri Gomberg
Mr. & Mrs. Edward Gormley
Mr. & Mrs. George Grady
Mr. & Mrs. Chad Grant
Mr. & Mrs. Edward Green, Sr.
Mr. & Mrs. Robert Hale
Mr. & Mrs. Keith Hall
Ms. Dorothy Hammill
Ms. Jen Hammill
Joan Hanna
Mr. & Mrs. Steven Harris
Mr. Christopher Hearey
Mr. & Mrs. Robert Henderson
Mr. & Mrs. Douglas Herner
Ms. Mary Catherine Hilley
Ms. Patricia Hockham
Ms. Eileen Hoff
Ms. Monica Howard
Ms. Karen Humm
Joey's Boutique
John F. Kennedy Memorial School
Ms. Elizabeth Jones
Mr. & Mrs. Sean Kahoun
Mr. & Mrs. Edward Keener
Mr. & Mrs. Thomas Kenney, Jr.
Ms. Veronica Kenney
Ms. Karen Knowlan
Ms. Heather Kolb
Ms. Pati Krasensky
Mr. & Mrs. William Lang
Mr. & Mrs. Daniel Lerch
Ms. Ann Marie Licciardello
Mr. & Mrs. Michael Maher
Mr. John March
Mr. & Mrs. Robert Mark
Ms. Louise Marzin
Dr. Gina Mateka
Mr. Bruce Matez
Mr. & Mrs. Thomas Mayo
Ms. Catherine McClendon
Ms. Colleen McCullough
Ms. Mary-Bernadette McElroy
Ms. Frances Megahan
Mental Health Association in Southwestern NJ
Ms. Jacquelyn Milchanoski
Ms. Erika Miller
Mr. Damond Miller
Mr. & Mrs. Joseph Miller
Ms. Patricia Mincey
Ms. Kristy Mitchell
Ms. Rebecca Mollis
Mr. & Mrs. Bruce Mosher
Mr. & Mrs. Donald Munson
Ms. Jacquelyn Myrick
Mr. & Mrs. William Nickerson
Ms. Ruth Novelli
Ms. Marya Oberfrank
Mr. & Mrs. Anthony Oliveri
Ms. Regina Ottman

Parkview Elementary
Ms. Joan Pearce
Ms. Wendy Pennington
Mr. & Mrs. Guy Pipitone
Ms. Adrienne Pipitone
Mr. & Mrs. Randal Price
Ms. Gail Priest
Mr. & Mrs. William Reilly
Mrs. JoAnn Reynolds
Mr. Scott Reynolds
Mr. & Mrs. Wayne Righter
Ms. Denise Rosen
Mr. & Mrs. George Ross
Ms. Debbie Roth
Mr. & Mrs. Gregory Rutolo
Samaritan Hospice
Ms. Samantha Sauer
Ms. Leigh Sceno
Ms. Dawn Schafer
Ms. Jillian Schneider
Ms. Dorothea Schroeder
Mr. Grant Schuhl
Ms. Connie Schwedes
Ms. Lisa Scott
Ms. Emily Seibert
Ms. Susan Senetruk
Ms. Danielle Sharples
Ms. Dennis Sherwood
Ms. Sandra Shoemaker
Mr. & Mrs. Ken Shuttleworth
Ms. Iris Sigman
Ms. Barbara Silverston
Mr. & Mrs. Robert Simmerman
Mr. & Mrs. Walter Smith
Ms. Jennifer Smith
Ms. Michelle Souders
Mr. & Mrs. Patrick Spring
Mr. & Mrs. Paul Stagliano
Mr. & Mrs. Richard Stagliano
Mrs. Yola Stagliano
Ms. Lesley Stone
Mr. William Sulzman III
Mr. & Mrs. Sean Taulane
Ms. Polly Taylor
Thomas E. Edison Elementary School
Ms. Michael Trinidad
Ms. Sherie Troendle
Ms. Jennifer Uhnat
UMDNJ School of Osteopathic Medicine
Mr. & Mrs. Patrick Vandermeer
Ms. Betsy Wasiak
Ms. Jamie Weaver
Ms. Donela Weber
Ms. Donna Weber
Mr. & Mrs. Paul Wentzell
Ms. Kathryn Wesley
Mr. & Mrs. Paul Williams
Mr. & Mrs. Thomas Williams
Mr. & Mrs. Peter Wilson
Ms. Ashley Yanni
Ms. Kathryn Yates
Mr. & Mrs. Keith Young

16TH ANNUAL GOLF TOURNAMENT

June 6, 2011

SPONSORS

Ballard Spahr

Benefit Concepts
Brown & Brown
Holman Ford
Johnny Janosik Charity Events
McKernan Architects & Associates
Musumeci Family Foundation
Office Products
Penny Green
PSE&G
Ragone, Lacatena, Fairchild, & Beppel
The Standard
TD Bank

HOLE SPONSORS

Burns Egan Byrne
Eileen Henderson
Ikon Business Solutions
John Jones
Deborah Kroop
Kulzer & DiPadova
Mister Softee
Linda & Peter Musumeci, Jr.
Mutual of America
Net Carrier, Inc.
Rick Phillips
The Promenade at Sagemore
James Putman
Rizzieri Aveda Salon School
Merilee & Greg Rutolo
South Jersey Industries
Richard & Geri Stagliano
Fran Witt

ADVERTISERS

Eileen Borland
DiCarlo Distributors
Gibson Electric, Inc.
In Memory of Regina Hill
Johnson Electronic Services
Phoenix Heating & Air Safeguard
South Jersey Welding Supply
Swisco, Inc.

PARTICIPANTS

Barry Abrams
Mike Andrelewicz
Andy Arnold
Grace Barr
Joe Barton
Joel Berison
Dave Bird
Bonnie Bornstein
Dan Boychuck
Mike Brady
Joanne Brigandi
Lori Capaccio
Harry Costello
Rob Curley
Steve DiCarlo
Jim Dwyer
John Ehresman
Eric Ehresman
Jim Entwistle
Dave Evangelist
John Evans
Del Evans
John Forsyth
Doug Fuller
Dan Furfari

Frank Furfari
Ed Galarza
Joe Gavlick
William Givens
Mark Gizzi
Jami Goodrich
Billy Goodrich
Connor Goodrich
Dan Haney
Jim Harris
Bruce Harrison
Chris Heiser
Judge Richard Hickey III
Billy Izer
Rick Jacodzinski
Chris Jaussi
Curtis Johnson
Fred Jurash
Bill Kates
Gary Koopman
Doreen Lacatena
Michael Lacatena
Chris Liese
Roy Lindstrom
Joe Linker
Rich Mason
Andy McCabe
Pat McLernon
Scott McNamee
John McQuilkin
Al Meihoffer
Barry Morrison
Jeff Mullen
Linda Musumeci
Peter M. Musumeci, Jr.
Aaron Nelson
Dan Obrien
Farrell O'Malley
Tom Parker
Jesse Pebley
Edie Pery Feyre
Gary Peters
Ted Pregardner
James Putman
Keith Reynolds
Peter Ringenary
Ed Russek
Matt Rutkowski
Greg Rutolo
Ryan Scannell
Vince Scott
Jeanette Scott
Patty Sheats
Steve Shellem
Richard Stagliano
Chris Stagliano
Terry Stafford
Brian Stringari
Andy Swenson
Jack Tarditi
Henry Tiver
Drew Townsend
Jill Townsend
Donna Townsend
Joe Tredinnisk
Don Tretola
Ted Trump
Lisa Vallaster
Brian Whildin
Steve Williams
Fran Witt
Jim Yondura

IN-KIND DONORS

Applebee's
Arden Theater Company
Bally's Atlantic City
Borgata
Mike Brady
Broadway Theater
Chili's
Disney World
Dorney Park Tickets
Foot Locker
Holiday Inn Historic District
Kulser & DiPadova
Lamberti's
Little Mill County Club
Loews Philadelphia
Philadelphia 76ers
Philadelphia Flyers
Philadelphia Union
Please Touch Museum
Susquahanna Bank
Jack Tarditi
Uno Chicago Grill
Anthony Vesper

A NEW BEGINNING EVENING

October 8, 2010

SPONSORS

Ballard Spahr
Beverly Manny - Ross Inventories
Comcast
Conner Strong
Holman Automotive
Deborah & Howard Kroop
Judy Brahlin
McKella 280
McKernan Architects & Associates
Primadonna
PSE&G
Ragone, Lacatena, Fairchild, & Beppel
Rizzieri
South Jersey Industries
Susquehanna
TD Bank
Toyota of Turnersville

ADVERTISERS

Abbey Carpet
Ameriprise Financial
Astro Sign Company
B & H International
Butler Woodcrafters
Caron Treatment Centers
Cort Furniture
Eileen Henderson
Fairmount Ventures
First Trust
Images Landscaping
In Memory of Mo Ruland
Mary Ann Ryan - Toyota
Micciche Computer Services
Monarch Housing
Mutual of America
Net Carrier
Office Products
Pep Boys
Phoenix

The Promenade at Sagamore
Proof Productions
Simplistic Staging
Stan's HVAC Services
Steinger
The Bank
The Closeout Group! Inc
Thomas Cupp Ballroom Dancing

IN-KIND DONORS

Andrea's Boutique
Astro Outdoor Advertising, Inc.
Beau Institute
Erin Becker
Ellen & Rich Bellamente
Bernard's Salon & Spa
Blue Mercury
Bonnie Bornstein
Judy Brahin
Brio Tuscan Grille
Canvas on Demand
The Capital Grille of Cherry Hill
Chop House
Classic Cakes
Paula Clearfield
Computer Hero
Alice Connelly
Cork
Thomas Cupp
Debbie Dahms
Carol DaSilva
Jill Denzenhall
Donna's Bag
Doreen's Massage
Doreen's Paraphernalia
Sharon Feery
Geets Diner
Healthy Kitchen
In the Knick of Time
Laura Kulcyk
Traci Kulp
Deborah & Howard Kroop
Little Dittys
Little Mill Country Club
Live with Regis & Kelly
Beverly & Kenny Manny
Kelli & Rich McGee
Holly McGill
McKella 280
Stephanie Melamed
Nancy Micale
Maribel Patruno
Dawn Paparone
PJ Whelihans
Pour House
The Promenade at Sagamore
Primadonna
Proof Productions
Julie Rienzi
Rozann Michael Aesthetics
Karen Ruccolo
Salon SoHa
Donna Sandoz
Scruples
Severino Pasta
Starr Restaurants
Sue B Photography
Susquehanna Bank
Roland Traynor
Treno
Ultimate Image & Body Wellness
Vine Street Imports
Vitarelli's

OPERATION BACKPACK

DONORS

Ms. Selena Accardi
Adventure Aquarium
Ms. Kiersten Arthur
Mr. & Mrs. Charles Bailey
Mr. & Mrs. Robert Banschler
Ms. Tracey Basista
Ms. Donna Bender
Ms. Samantha Benvissuto
Mrs. Christine Betson-Smith
Bj's
Mr. Robert Blass
Ms. Barbara Bonner
Borger, Jones, Matez, & Kelley-Cain P.A.
Ms. Eileen Byrne Borland
Ms. Bonnie Bornstein
Boscov's
Ms. Lisa Bosley
Mr. Dan Boychuck
Ms. Christopher Bradie
Ms. Judy Brahin
Mr. Devon Brey
Dr. & Mrs. Gary Brickner
Ms. Colleen Buorigiovanni
Girl Scout Troop #30868
Mr. & Mrs. Michael Camardo
Camden Riversharks
Baseball Club
Campbell Soup Company
Capehart & Scatchard
Mr. & Mrs. Anthony Carlucci
Ms. Denise Cavaliere
Ms. Anna Chen
Cherry Hill Mall
Ms. Linda Chesney
Church of the Good Shepherd
Church of the Holy Spirit
Ms. Nancy Ciampa
Ms. Lauren Ciccarelli
Mr. Jorge Cintron
Ms. Rita Clark
Mr. Joseph Colline
Comcast Foundation
Congregation Beth Tikvah
Ms. Becky Cooke
Mr. Robert Cooper
Cooper Learning Center
Cooper University Hospital
Cooper University Physicians
Mr. & Mrs. Robert Corson
Courier Post
Ms. Susan Croll & Mr. Paul Monasevitch
Mr. & Mrs. Joe Cygan
Ms. Deborah Dahms
Ms. Ann Digiovanni
Mr. & Mrs. Joe Dobias
Ms. Karen Dodd
Ms. Harris Drachman
Ms. Cathryn Edge Smith
The Estacio-Touhey Family
Ms. Demetra Evans
Ms. Suzanne Ficara
Ms. Charlene Finley
Ms. Joyce Fisher
Mr. & Mrs. Richard Floreck
Dr. Leo Forsberg Jr.
Gannett Fleming, Inc

Ms. Nicole Gee
Genco
Ms. Courtney Gerdes
Ms. Jill Gilfillan & Mr. Jack Scott
Ms. Margie Glass
Mr. & Mrs. William Goodrich
Ms. Helen Gorman
Ms. Eileen Gorsen
Mr. & Mrs. Joel Green
Groupon
Ms. Brianna Guattani
Ms. Barbara Haas
Mr. Henry Haley
Ms. Patty Hambrecht
Mr. Christopher Hansen
Ms. Dian Hatrick
Ms. Anne Hoban
Ms. Ruthann Hoffner
Holding Hands Day Care
Mr. Brian Hull
Ms. Kathy Huston
JC Penny Deptford Mall
Ms. Gretchen Jenofsky
Jewish Senior Housing and Healthcare Service
Junior Girl Scout Troop 62002
Ms. Jane Kandell
Mrs. Eileen Kane
Mr. & Mrs. John Kearney Esq.
Ms. Lorraine Kennedy
Ms. Joanne Kipnis
Ms. Ken Kirkland
Ms. Elaine Kleinman
Ms. Donna Koenig
Kohl's
Mr. Gary Koopman
Mr. Barry Kratchman
Mr. & Mrs. Karl Kraus
Dr. & Mrs. Howard Kroop
Kulzer & DiPadova, PA
Mr. & Mrs. Ronald Kyle
Ms. Barbara Ladzinski
Ms. Kristin Leavey
Ms. Paloma Lenoci
Ms. Lisa Leone
Ms. Julie Levy
Lions Club of Williamstown
Ms. Iouri Manovskii
Ms. Lisa Mansfield
Ms. Jen Marucci
Ms. Carley Markel
Ms. Mary Marsh
Ms. Marta Martino
Ms. Louise Marzin
Ms. Janis Massimilla
Ms. Marianne McCafferty
Ms. Cheryl McCauley
Mr. & Mrs. James McElhenny
Ms. Stephanie McGee
Ms. Cathie McGerhan
McKernan Architects & Associates
Ms. Sally McLachlan
Ms. Jeannine McMenamin
Ms. Judith McNamara
Ms. Linda Miller
Ms. Rebecca Mollis
Ms. Gail Mothershead
Mr. Alicia Murphy
Ms. Michele Naurath
New Jersey American
Water Company

New Jersey School
Development Authority
Ms. Elaine Nieukirk
NuStar Employees
Office Basics, Inc.
Ms. Gail Olans
Old Navy
Ms. Janet Overstreet
Ms. Susan Pacuta
PBF Energy
Penn Children's Center
Ms. Carolyn Pierantozzi & Mr. Mike Durso
Ms. Ericka Poletti
Ms. Allyson Pollock
Mr. & Mrs. Patrick Procaccino
ProForma
The Promenade at Sagamore
Ms. Joanne Puscian
Ms. Renee Ramick
Mr. Jeff Ranalli & Ms. Trina Poretta
Red Lobster Employees
Ms. Nicole Reece
Mrs. JoAnn Reynolds
Rohrer Center for Fitness
Mr. & Mrs. Mark Rondeau
Ms. Gail Rosen
The Rosen Family
Rowan University at Camden
Ms. Nora Joan Rush
Ms. Theresa Rutkowski
Ms. Patricia Rutter
Ms. Angelique Rutter
Sal Vito Pizza
Samaritan Hospice
Employees
Mr. & Mrs. David Schaming
Mr. & Mrs. W. Bernard Schaming
Ms. Joelle Schlump
Ms. Dot Seeburger
Ms. Peg Sell
Ms. Gerri Sell
Mr. Kevin Shah
Ms. Mary Shaughnessy
Mr. & Mrs. Ken Shuttleworth
Mr. Ken Siegel
Ms. June Siegel
Mr. Bradley Skaar
Ms. Christine Slachta
Ms. Lori Sley
Ms. Nicole Snyder
Ms. Kay Sowa
St. Paul's Lutheran Church
Ms. Joan Stafford
Ms. Sharon Stafford
Mrs. Yola Stagliano
Ms. Amy Spillane
Susquehanna Bank
Ms. Carol Swanson
Tabernacle of Faith Church
Target Corporation
Ms. Meredith Thomas
Ms. Jenny Thomas
Ms. Jane Tonkin
Ms. April Trengre
The United Presbyterian
Church of Atco
United Way of Camden County
United Way of Gloucester County
Ms. Olga V. Del Sol

Ms. Carol Anne Visalli
Volunteer Center of
Camden County
Volunteer Center of
Gloucester County
Mr. & Mrs. Gregory Voronov
Mr. & Mrs. Richard Wainwright
Wal-Mart
Ms. Joanne Walko
Ms. Courtney Wallace
Ms. Shirly Walsh
Ms. Christine Wandach
Mr. & Mrs. Thomas Weber
Ms. Janine Weinreb
Mr. John Weiss
Women's Club of West Deptford
Ms. Carol Woodward
Ms. Mary Ellen Woodward
Wyanoke Group
Ms. Judeth Yeany
Ms. Patricia Youhas
Ms. Linda Zardus
Mr. John Zelinski III

HOLIDAY GIFT PROJECT

DONORS

Ms. Sharon Ackley
Ms. Stephanie Ahrens
Audubon High School
Barnes & Noble Booksellers
Ms. Magaly Barone
Ms. Blais Becky
Ms. Samantha Benvissuto
Mr. & Mrs. Jim Bigley
Ms. Dawn Blum
Ms. Jessica Boatwright
Ms. Rosalla Brimmer
Ms. Joelle Brodhecker
Ms. Cyndi Brodnyan
Mr. Kevin Brown
Ms. Ebony Brown
Burlington Coat Factory
Employees
Ms. Michelle Cabrera
Ms. Holly Caccia
Ms. Clem Cameron
Campbell Soup Company
Ms. Lisa Capasso
Center for Health Fitness - Virtua
Outpatient Rehab
Cherry Hill Mall
Chil's Tri State Area
Ms. Nancy Ciampa
Dr. TJ Citta-Pietrolungo
Ms. Rita Clark
Ms. Lillian Cooper
Mr. & Mrs. Robert Corson
Ms. Nicole Coryell
Country Walk Homeowners'
Association
Courier Post
Ms. Jan Crick
Ms. Susan Croll & Mr. Paul Monasevitch
Ms. Kate Custer
Mr. & Mrs. Joe Cygan
Ms. Cynthia Davidson
Mr. Matt DeChristopher
Mr. James Diaz
Ms. Louise DiRenzo
Ms. Joann Donnelly
Ms. Jessica Driscoll
Mrs. Cathryn Edge Smith
Ms. Marietta Engle
Ms. Demetra Evans
Ms. Andean Evenski
FBI - South Jersey
Resident Agency
Ms. Suzanne Ficara
Filomena Lakeview
Ms. Karl Fisher
Ms. Barbara Foulks
Ms. Diane Fuller
Mr. John Gallo
Ms. Kim Gamelli
Ms. Shakeira Genet
Ms. Tiana Stephens Gibson
Ms. Margie Glass
Ms. Michele Goldstein
Ms. Nancy Gonzalez
Ms. Kristen Green
Ms. Carolyn Gross
Ms. Dawn Grossman
Ms. Jennifer Guariglia
Mr. Joseph Gunn
Mr. & Mrs. William Hammill, Jr.
Mr. Ronald Harvey
Ms. Susan Heffernan
Ms. Gloria Henderson
Mr. Robert Herrmann
Ms. Debra Hillman
Ms. Carole Hlavka
Mr. William Hoese
Mr. Jared Hoover
Ms. Marilyn Houston
Ms. Lori Howard
JC Penny Deptford Mall
Ms. Beth Jugenheimer
Mrs. Eileen Kane
Ms. Barb Karp
Ms. Kathy Karpovich
Ms. Lorraine Kennedy
Kennedy Health Alliance
Kohl's
Mr. & Mrs. Karl Kraus
Ms. Lois Kroeck
Ms. Barbara Ladzinski
Ms. LM Lanzalone
Ms. Kristin Leavey
Ms. Lisa Leone
Ms. Jessica Lewis
Liberty Mutual
Cherry Hill Mall
Lions Club of Williamstown
Lions Gate Retirement
Community Center
Mr. & Mrs. Dale Livingston
Lockheed Martin
Electron
Logan Generating Co., LP
Ms. Maryanne Lomberg
Mr. Lance Love
Ms. Dreana Lydic
Maggiano's Little Italy
Ms. Mary Marsh
Ms. Louise Marzin
Ms. Carol May
Ms. Marianne McCafferty
Ms. Sandy McGuigan
McKernan Architects & Associates

FUNDERS

Ms. Dawn McLaughlin
Ms. Paula Moen
Mr. Adam Mosley
Ms. Karen Murphy
Ms. Mary Ann Murrow
Ms. Rachel Nunn
NuStar Employees
Ms. Diane O'Neill
Old Navy
Ms. Lisa Oriolo
Our Lady of Hope
Regional School
Ms. Janet Overstreet
Ms. Annette Page
Pajama Program
Ms. Kathy Palmerchuck & Girl
Scout Troop 66764
Ms. Christine Pape
Mr. Robert Paull
Penn Children's Center
Ms. Kate Pettit
Ms. Ericka Poletti
PS from Aeropostale
Mr. Jim Purisky
Ms. Sharon Queen-Johnson
Ms. Erika Radetich
Red Lobster Employees
Ms. Nancy Reese
Ms. Ellie Ricciardi
Ms. Tatiana Rivera
Ms. Heather Robinson
Mr. Michael Rollison
Ms. Wendy Rose
Mr. Justin Roy
Ms. Erin Royston
Ms. Illene Rubin
Rutgers Psychology Club
Ms. Robin Rutberg
Rutgers Cooperative
Extension/EFNEP
Ms. Patricia Rutter
Ms. Linda Sawyer
Ms. Marie Schaffer
Mr. & Mrs. W. Bernard Schaming
Ms. Dulie Schmidt
Ms. Jenny Schmincke
Ms. Janeen Scuderi
Ms. Dot Seeberger
Mr. & Mrs. Andrew
Segrave-Primus
Ms. T aylour Sena
ServiceMaster TBS Division
Ms. Megan Sheehan
Ms. Gail Shest
Ms. Julia Shields
Shoprite
Ms. Lori Sky
Ms. Diana Smarrito
Ms. Nicole Snyder
Ms. Cynthia Sofka
South Jersey Paralegal
Association
Ms. Donna Spross
Square One
St. James Episcopal Church
St. John the Evangelist
Ms. Joan & Sharon Stafford
Mr. & Mrs. Paul Stagliano
Mrs. Mary Ellen Stasko
Ms. Jeanette Stein
Ms. Tiana Stephens
Ms. Lynne Straker

Ms. Karen Stratton
Sweet Escape
Ms. Rita Szatny
Tabernacle of Faith Church
Target
TD Bank Employees
The Goddard School
The Promenade at Sagemore
Ms. Shenell-Victoria Thomas
Ms. Cynthia Thurairajah
Ms. Ariel Tokarczyk
Tomaro's C.H.A.N.G.E.
Turnkey Sports & Entertainment
Ms. Sherry Tweed
Umansky Family
Unitarian Universalist Church
United Way of Central Jersey
Ms. Shannon Vallery
Ms. Lori Wallace
Washington Township High School
Wyanoke Group
Ms. Marie Weaver
Ms. Margaret Weber
William G. Roher Center for
Health Fitness
Ms. Katie Wisner
Women's Club of West Deptford
Ms. Patricia Youhas
Ms. Linda Zardus

CFS PROGRAMS

IN-KIND DONORS

Ms. Kim Abel
ACS Club (Rowan University)
Mr. Mike Corsello
Ambassador Christian Academy
Ambassadors at Four Seasons
at Weatherby
Ms. Rachael Anderson
Angels of God Clothing Closet
Ms. Paola Antenucci
Deptford Township High School
National Honor Society
Aversa's Italian Bakery
Mr. & Mrs. Jose Baez
Ms. Fareba Bagherpour
Ms. Nancy Barna
Ms. Jennifer Batavick
Mr. & Mrs. Kenneth Behrns
Mr. Kyle Benson
Mr. & Mrs. Eric Berman
Ms. Margaret Bernetch
Ms. Glenda Beschen
Ms. Terry Blantz
Ms. Gina Blevins
Ms. Betty Boccelli
Mr. John Bono
Ms. Sheena Broume
Dr. Miles Brumberg
Mr. & Mrs. Mark Brunermer
Ms. Amanda Buck
Ms. Colleen Buckley
Ms. Lynn Bullock
Ms. Susan Burns
Ms. Jackie Caban
Ms. Danielle Calandra
Camden County Library
Mr. & Mrs. Mike Campanell
Ms. Arlene Canosa
Ms. Sharon Carluccio

Ms. Jean Carr
Ms. Katie Cashman
Ms. Gainell Chalmus
Ms. Kristin Charsha
Ms. Natalia Chatman
Ms. Barbara Chopek
Christian Trinity Chapel
Church of the
Good Sheppard
Ms. Jennie Cilurso
Ms. Maria Cinquina
Ms. Rose Clark
Ms. Sheresa Clement
Ms. Fran Coakley
Ms. Sue Cohen
Mr. & Mrs. Randy Conley
Mr. Trevor Connors
Ms. Maryann Conover
Ms. Madeline Costigan
Mr. Joshua Crick
Ms. Pamela Cross
Cross-Fit Philly
Ms. Heather Crotty
Mr. Kevin Dahm
Ms. Linda Dalessandro
Ms. Latisha Davis
Mr. Lawrence Deewey
Ms. Yadira DeJesus
Ms. Claudette Depaul
Mr. Matthew DiGiacomo
Ms. Nancy DiMattia
Ms. Stephanie Docimo
Mr. Lucious Donaldson
Ms. Nancy Dubars
Ms. Jean Eaton
Ms. Sophia Ekonomou
Ms. Elizabeth Emmett
Erial Elementary School
Mr. Glenn Etherington
Ms. Angie Farls
Mr. Bill Feeney
Ms. Jennifer Feldman
First Presbyterian Church
First Presbyterian Church of
Clayton
Ms. Jessica Fisher
Ms. Sue Fitzgerald
Ms. Sharyn Fooks
Franciscan Missionary
Sisters of IHM
Frenchtown Presbyterian
Church
Ms. Kim Gallicchio
Mr. Steven Galluzzo
Mr. Michael Garbarino
Ms. Joan Geraci
Mr. Richard Gibson
Mr. & Mrs. Joseph Gillespie
Mr. & Mrs. Jeffrey Giordano
Ms. Chritine Gipple
Glassboro High School
Ms. Jacki Glenz
Mr. John Glesstar
Ms. Joanne Glessner
Gloucester County
Institute of Technology
Gloucester County Special
Services School District
Godiva Boutique
Ms. Catherine Goehringer
Ms. Abigail Goffrey
Ms. Coleen Gormley

Ms. Natalie Grayson
Ms. Lolita Green
Guardian Angels School
Girl Scouts
Ms. Barbara Haase
Ms. Marisa Haimes
Ms. Amy Hall
Mr. Wes Hall
Ms. Paulette Hand
Ms. Sheena Harmon
Ms. Yvonne Harris
Ms. Cora Harrison
Ms. Colleen Harrow
Ms. Marie Hennessy
Mr. Ben Heritt
Mr. & Mrs. Henry Herrera
Ms. Margaret Hightower
Ms. Sidney Horn
Ms. Susan Ianello
International Health Care
Volunteers
Ms. Nancy Ipri
Ms. Alyssa Irwin
Ms. Rita Jacobson
Ms. Toni Johnson
Ms. Laura Jones
Mr. Wayne Jones
Ms. Michael Jones
Just 4 Kids Consignment
Mrs. Donna Kebea
Ms. Mary Kitchin
Ms. Peggy Koen
Ms. Cynthia Korin
Ms. Carol Kosta
Ms. Cathy Kyle
Ms. Kathryn L'Esperance
Ms. Jeanne LaBuz
Ms. Doris Lamaca
Mr. Tom Landry
The Lauren Rose Albert
Foundation
Ms. Sherron Laurrell
Mr. John Lawall Jr.
Ms. Pamela Leewer
Ms. Maureen Lex
Mr. Winfield Licciardello
Mr. Greg Lorch
Ms. Maryanne Loughran
Ms. Ann Marie Ludes
Ms. Carole Lytell
Mr. Richard Macdonald
Ms. Maria Mackiewicz
Ms. Tina Madden
Rev. Msgr. Michael T. Mannion
Mr. & Mrs. Rob Matthews
Mr. & Mrs. James Maule
Mr. Wayne Mayberry
Ms. Danielle Mazza
Ms. Diane McClintock
Ms. Sharon McDuffy
Ms. Doreen McEnroe
Ms. Stacey McIlvaine
Ms. Karen McKinney
Ms. Andrea Meehan
Ms. Nancie Merritt
Ms. Joan Merth
Ms. Karla Meyer
Mr. James Meyer
Mr. Bill Meyler
Ms. Kelly Miller
Ms. Anita Mills
Ms. Joyce Mollure

Ms. Lori Monaghan
Ms. Nancy Monte Carlo
Ms. Mary Moorman
Ms. Janice Morrison
Ms. Kim Muchler
Ms. Tara Murphy
Ms. Rebecca Murphy
Ms. Eleanor Muse
Mr. & Mrs. Rich Nardella
Ms. Ginny Narolewski
Ms. Laura Nelson
Mrs. Carol Newman
Ms. Maria Nocchi
Ms. Christina Norris
Ms. Karlene O'Connor
Ms. Jean O'Donnell
Ms. Alexandria O'Connor
Mr. & Mrs. Anthony Ormsby
Mr. & Mrs. Kevin Overbeck
Ms. Dawn Packer
Ms. Iris Pagan
Ms. Denise Passarella
Ms. Pelleson
Ms. Darlene Pepeta
Ms. Andrea Perna
Ms. Gail Persia
St. Joseph Columbiettes
Ms. Debbie Piccioni
Ms. Heather Pierce
Mr. & Mrs. Anthony Pietrinferno
Mr. Paul Poniatewski
Ms. Stacie Pratt
Ms. Mary Previtera
Ms. Rosemarie Puglia
Ms. Bonnie Rabin
Ms. Savalla Rambo
Ms. Linda Raup
Mr. Kevin Rice
Ms. Renee Richardson
Mr. Otto Riess
Ms. Megan Riley
Ms. Ana Rivera
Mr. Andre Robinson
Ms. Lynette Rothstein
Mr. Douglas Salon
Mrs. Madeline Sands
Ms. Day'Nelle Sansbury
Mr. Anthony Santos
Mr. & Mrs. Raymond Scarduzio
Mr. Shawn Scott
Ms. Kristine Sease
Ms. Beverly Shapiro
Ms. Debby Shipper
Mr. Ron Sierzega
Ms. Letisha Smith
Dr. Joseph Sokolowski
Ms. Carol Sparks
St. Mary's Roman
Catholic Church
St. Michael the Archangel
Regional School
Ms. Lauren Streit
Ms. Diana Sutcliffe
Ms. Colleen Teddy
Ms. Sue Temmler
Ms. Heidi Terranova
The Post House
Thomas E. Bowe School
Ms. Terri Thompson
Mr. & Mrs. Richard Travaline
Ms. Kinyce Twyne
Ms. Tiffany Velez

Ms. Rena Viola
Ms. Angel Viviani
Mr. & Mrs. John Volpe
Ms. Elsie Waegle
Ms. Shirley Walker
Ms. Regina Wall
Ms. Kelly Walsh
Washington Township
Education Association
Ms. Noreen Weatherstone
Mr. Joe Welch
Mr. & Mrs. Joseph Wells
Wenonah Elementary School
White Oak Baptist Church
Ms. Dorothy White-Geesey
Ms. Lois Whiting
Mr. Brett Wicker
Mr. John Wilbraham
Mr. & Mrs. John Williams
Ms. Megan Williamson
Ms. Tina Wiltsee
Ms. Elsie Woegle
Ms. Randi Woerner
Women's Club of Pitman
Ms. Jo-Ann Wood
Ms. Licia Woody
WTHS (Festival of Friends)
Ms. Barbara Wunsch
Ms. Elaine Zafriadis

AGENCY UNITED WAY CAMPAIGN

DONORS

Ibrahim Abdul-Quddus
Seerajini Adams
Wendy Alexander
Sabrina Alexander
Lisa Allen
Elixandra Alvarez
Charles Ansert
Adrian Aponte
Gwyn Ashmore
Terry Austin
Shannon Baals
Nesmaida Baez
Sabrina Banks
Jacqueline Baumgarten
Therese Benyola
Sue Bergmann
Keisha Bishop
Lois Christine Botti
Phoebe Brady
Mary Jane Branda
Kim Brown
Emily Buchenhorst
Jeana Bunting
Maria Burgos
Keshet Burt-Hedrick
Cherokee Cabell
Lisa Carter
Carmen Castillo
Rose Ciglar
Carolanne Ciocca
Anthony Comito
Valerie Connelly
Jacklyn Coombs
Anita Corribeau
Cherie Corsey
Blanca Cosme
Nakiya Cox

Sharon Cox
 Addie Cummings
 Iroquois Davis
 Stephanie Davis
 Raymonique Davis
 Karen Deacon
 Amy DeGirolamo
 Virginia DeLong
 Benjamin Dillard
 Imani Dixon
 Cheryl Eiler
 Lara Farrokn
 Alexis Faulkner
 Kristin Federici
 Yodanna Fernandez
 Madelyn Ferringo
 Cornelia Fisher
 Barbara Fleagle
 RoxAnne Flores
 Chiquita Foat
 Angelica Freeling
 Sara Gallagher
 Adam Gaubinger
 Valerie Geer-Jefferson
 Terri Gifford
 Erica Gilliane
 Judyann McCarthy
 Colleen Gormley
 Bruce Graham
 Louisa Graves
 Carolyn Gribbin
 Desiree Guyton
 Ryan Hall
 Jennifer Hammill
 Darlene Harley
 Susan Hawk
 Ellen Heine
 Eileen Henderson
 Maurice Hopkins
 Gwendolynn Houldsworth
 Philip Huber
 Theresa Humphrey
 Frances Hunt
 Jerry Hunt
 Dwayne Ingram
 Robbenmarie Insoigno
 Beverly Jackson
 Daphne Jackson
 Jackson LaKisha
 Lynda Jeanty-Edmon
 Kelly Quick
 Joanne Johnson
 Tiffany Jones
 Kathleen Jurman
 John Karp
 Barbara Kassekent
 Dara Kates
 James Kearney
 Augustine Kebbie
 Gwendolynn Kent
 Lindsay Kowal
 Bambii Kreal
 Robert Laczynski
 Richard Lange
 Linda Lehman
 Ana Leon-Bornslini
 Kristy Loringner
 Mary Love
 Nancy Lubars
 Victoria Mahand
 Marie Makel
 Abigail Malave

Sophia Marandino
 Barbara Maronski
 Ethan Mays
 Elizabeth McCool
 Cassandra McKie
 Marcus Meanra
 Rafael Mendez
 Noemi Mercado
 Zofia Mlynarz
 Kelly Morris
 Cathy Mund
 Linda Mur
 Careen Neba
 Rachel Negro
 Theresa Negro
 Janet Nixon
 Ethel Norton
 Tammy Oliver
 Yesenia Oquendo
 Sonettan Orr
 Carolyn Pace
 Maria Pagan
 Latoya Payne
 Caitlin Peraria
 Laurie Phillips
 Doralisa Placencia
 Ann-Michele Potvin
 Josephine Poulson
 Ena Prewitt
 Deborah Primas
 Carmen Quinones
 Rosa Ramos
 Terri Reed
 Erika Reyes
 Beth Reynolds
 Regina Ridge
 Lydia Rodriguez-Torres
 Lavenda Rogers
 Amelia Romaine
 Junior Rosbia
 Denise Rosen
 Lindsay Rubel
 Lillian Rubert
 Mary Rudnick
 Lisa Rupp
 Merilee Rutolo
 Mary Sanchez
 Stacy Santiago
 Kirk Schoenberg
 Harriet Schulman
 Kristine Seitz
 Tara Segrest
 Ellen Sheinkin
 Nicole Sheppard
 Beth Shultz
 June Siegel
 Patricia Sigismondi
 William Simms
 Etta Simmons
 Deborah Simmons
 Domian Siplin
 Janet Smith
 Candice Spence
 Richard Stagliano
 LeRoy Stanford
 Robin Stockton
 Olga Lee Straub
 Andrew Swenson
 Lauren Taylor
 Vesha Thompson
 Lane Tita
 Danielle Trout

Eric Velazquez
 Anthony Vesper
 Doris Vidal de Jackson
 Margaret Wachowski
 Barry Wartenberg
 Jennifer Washington
 Sherron Weatherspoon
 Suzanne White
 Jinel Whiteside
 Taylor Willmot
 Margaret Wilson
 Mary Beth Woodward
 Melissa Young
 Jessica Zuniga

CAMDEN COOPER LANNING PROMISE NEIGHBORHOOD (CCLPN) TEAM

PARTNERS AND PROVIDERS

American Reading Company
 Annie E. Casey Foundation
 CAMcare
 CamConnect
 Camden City Board of Education
 Camden Coalition of Healthcare Providers
 Camden County College
 Camden High School
 Camden Promise Charter School
 Campbell Soup Company
 Center For Family Services
 City of Camden
 Community Planning and Advocacy Council
 Cooper Foundation
 Cooper Lanning Civic Association
 Lanning Square Family School
 Lanning Square West
 Residents in Action
 Planned Parenthood
 Project H.O.P.E.
 Rowan University at Camden
 Rutgers University
 South Jersey Eye Center
 Southern New Jersey Perinatal Cooperative
 Susquehanna Bank
 United Way of Camden County
 Urban Promise

READING BLITZ VOLUNTEERS

Dereck Acevedo
 Gloria Acey-Davis
 Briell Adams
 Lisa Adamson
 Elizabeth Adamson
 Garrictz Adamson
 Bree Allen
 Mona Aly
 Sophie Arsenlis
 Christina Ayala
 Joanne Bamgbose
 Mike Barkley
 Nadine Barr
 Brian Baurele
 Randy Beck

Marcin Bielecki
 Dan Bowen
 Jonathan Briggs
 Kim Brown
 Mary Brown
 Megan Brown
 Michelle Brown
 Penny Brown
 Robert Burns
 Chris Caldwell
 Debbie Calesnick
 Megan Carlin
 Brigid Carmody
 Denise Cascio
 Fran Cassidy
 Erica Clark-Rouse
 Charlene Coady
 James Cocivera
 Mercia Coleman
 Kristin Collins
 Carly Colorado
 Blanca Cosme
 Kristen Coyne
 Ellen Crain
 Nicole Cullen
 Addie Cummings
 Justin Cunnave
 Chester Davis
 Jordan Dennis
 Kate DeSantis
 Mark Dillan
 Gary Divens
 Annie Duklewski
 Denise Dunn
 Adalila Echevarria
 Kevin Eddis
 Andrew Elliott
 Phillip Faraone
 Josue Figueroa
 Brad Fischer
 Maria Gambel
 Victor Garcia
 Fran Gates
 Matthew Gehman
 Pamela Goldberger
 Kyosha Graves
 Randy Green
 Toniesha Green
 Galina Grimberg
 Krystal Grossmith
 Jen Hammill
 Jackie Hanna
 Jaclyn Hargraves
 Dawn Hathaway
 Eileen Henderson
 Emily Herron
 Asia Higgins
 Chad Hughes
 Lauren Hutchins
 Paul Iacouoni
 AJ Jensen
 Gee Johnson
 Kate Johnston
 Jasmine Jones
 Alexa Kalin
 Anne-Marie Katz
 Dezhon Keeny
 Mike Kitchell
 John Koba
 Lori Kuser
 Ashleigh Laier
 Kathy Lake

Aryn Langford
 Jill LaPan
 Sondi Lee
 Jessica Lochnel
 Christina Lupo
 Mary Lutz
 Melanie Lynch
 Dan Maney
 Amber Lee Matalucci
 Melissa Maycott
 Lisa Mayer
 Linda Mazzoli
 Cheryl McCauley
 Tyrone McCombs
 Cathie McGeehan
 Cori Meredith
 Sheila Miller
 Natalie Milstein
 Dan Monteforte
 Merigan Mulhern
 Jennifer Mullen
 Jennifer Murphy
 Sherita Nzali
 Ryan O'Hagan
 Charles Oropallo
 Margie Outler
 Jermir Paige
 Ambika Paulson
 LaToya Payne
 Kate Pettit
 Chabvera Phillips
 Adrienne Pipitone
 Katie Pluta
 Alex Pozza
 Nahi Rai
 Ramesh Rajan
 Sheila Reyes-Houseal
 Beth Reynolds
 Lorraine Ricchezza
 Sandra Rice
 Vanessa Riopedre
 Lauren Rogers
 Joeliza Rosado
 Carol Rosarto
 Joseph Rosen
 Stephanie Ross
 Dave Rucci
 Merilee Rutolo
 Charlene Ruzynski
 Aaicha Sagar
 Kelsey Sanderson
 Angel Sasso
 Greta Sawa
 Suzanne Sawyer
 Jen Shipon
 Suzanne Simons
 Diane Simpson
 Liz Slocum
 Deborah Smack
 Theresa Smith
 Scott Stacy
 Richard Stagliano
 Doreen Stowell
 Michel Strom
 Bill Stunder
 Nathan Stypinski
 Leslie Tarr
 Dymir Tate
 Ashley Taylor
 Lane Tita
 Dara Trout
 Danny Veres

Aimee Volpe
 Laticha W.
 Lauren Wadipress
 Lindsay Waldman
 Courtney Walkker
 Remedios Watkins
 Sharon Weinman
 Kimberly Whitehead
 Charles Wilson
 Mercedes Wilson
 Matt Wolf
 Mary Beth Woodward
 Rachel Zindel
 Kevin Zimmerman
 Gaeton Zorzi

PROJECT COPE

MENTORS

Taimarie Adams
 Rose M Agostini
 Rachel Anglade
 Louise Antilus
 Diamond Arthur
 Selina Ashland
 Denise Aster
 Ty Baker
 Jennifer Baldwin
 April Barber
 Rick Barca
 Lilly Baxter
 Reginald Beckett
 Yvette Benjamin
 Samantha Bennett
 Christina Bianca
 Cathy Biel
 Lori Boschetto
 Anne Marie Boyan
 Valerie Bradley
 Tanya Branch
 Dr. Brown
 Sean Brown
 Shaniqua Brown
 Frank Candell
 Justine Carr
 Brian Cassidy
 Tykeem Champion
 Caesar Chandler
 Stacy Chando
 Nancy Chesson
 Jennifer Cipparone
 Dean Coder
 Randie Cosby
 Jordan Cox
 Bridget Coyle
 Jennifer Cummings
 Yolanda Curtis
 Linda DuBois
 Terry Duffy
 Casie Dufresne
 Donna Ellison
 Matthew Epps
 Cassandra Faison
 Bryant Feld
 Stevenson Figueoara
 Samantha Flatt
 Linday Gillen
 Judyann Gillespie
 Persel Gilliam
 Paula Goldberg
 Yahaira Gomez

FUNDERS

Barry Graf
Ruby Green-Williams
Naijah Gregory
Jennifer Guariglia
Sarah Guirguis
Emily Haas
Jeana Hagan
Martina Harmon
Bonita Hawkins
Jennifer Hess
Lisa Marie Heyward
Neill Hildebrand
Colleen Hinds
Levita Hough
Alexandra Howery
Melissa Hubscher
Claudette Hughes
Sarah Huntley
Michael Jackson
Jacquelyn James
Vera Jenkins
Kelly Jernegan
Constance Johnson
Keith Lamphere
Melanie Lane
Jason Laughlin
Helen Anne Legetti
George Lewis
Dedra Lombardi
Lisa Longo
Richard Lowery
Nancy Lubars
Lorah Ludwig
Christina Mahan
Lauren Maunz
Nikeisha Mays
Donal McCarthy
Dawn Mc Donald
Andrea McConnell
Laura McNamara
Taylor Meckley
Ed Miller
Lauren
Kim Moffett
Janice Moore
Lola Moore
Patricia Moss
Anthony Nunez
Danielle O'Brien
Kimberly O'Kane
Mary Oliver
Kathleen Olszewski
Celeste Paz
Joan Pearce

Vanessa Peele
Tiana Pellew
Christina Perrotta
Laurie Ann Phillips
Marjorie Phillips
Danielle Pinkston
Stephanie Pratt
Vance Propati
Julia Pujols
Giselle Quintanilla
Katie Raftery
Andretta Randall
Meghan Reess
Frank Reilly
Kimberly Rey
Kristine Rhodes
Stephanie Roberts
Chanel Robinson
Davina Robinson
Remi Salters
Tony Saranchuk
Juanito Savaille
Deb Saxenmeyer
Michelle Schultes
Anna Sedgley
Kate Semar
Bonnie Sherer
Lisa Silby
Cheryl Smith
Tenisha Smith
Nick Sochanchak
Joseph Sokolowski
Hollie Stamper-Gimbar
Devon Starling
Kelsey Stuhltrager
Amy Sunderhauf
Kristin Sutherland
Tracey Sweet
Jaclyn Tennyson
Jerry Thach
Tara Trongone
Geraldine Valdez
Amanda VanPelt
Henrietta Wallace
Patti Ward
Robert Wardlow
Judith Washington
Jacqueline Waxman
Jessica Wheeler
Laura Wiczorek
Jessica Williams
Michael Williams
Scott Willloth
Denise Wills

Meya Wilson
Joe Wolfgang
LeTray Womble
Edward Yajcaji
Anastasia Zawierucha
Katherine Zielsdorf
Crystal Zienowicz
Gabriella Zozzaro
Debra Zygmunt

QUIXOTE QUEST

VOLUNTEERS

Dan Abraham
Shiv Advani
Michael Ahearn
Cynthia Ahmed
Samir Ahmed
Tarum Ahmed
Mona Ally
Ngozi Alston
Hannah Berardinelli
Katelyn Brewer
Kim Brown
Megan Brown
Michelle Brown
Carmela Buono
James Caceres
Jen Caceres
Assunta Carey
Kayla Carroll
Melissa Clearly
Kristin Collins
Coleman Cosby
Megg Crandell
Jeannie Culin
Nicole Cullen
Mikala Cummings
Laura Defeo
Kimmey Dickenson
Amy Earley
Dara Eckholy
Samantha Elliot
Effie Ferti
Alison Foglia
Mehgan Forkel
Ryan Forkel
Karly Forman
Prawallika Gangidi
Mary Kate Gentile
Siena Gesmondi
Alachia Gilmore
Alex Goebler

Brianna Goitiandia
Sandra Goldlust
Julie Gromek
Nehal Gupta
Paul Iacovoni
Emma Haught
Rachel Hassert
Alex Hobbs
Mary Hoover
Adam Horowitz
Sidrah Jamal
Abinav Janakiraman
Pramodh Janjanam
Sindura Janjanam
Alex Jarama
Arisha Javed
Akanksha Kapoor
Jessica Kazor
Lisa Levanduski
Jing Lin
Stephanie Maganzin
Deepa Mahadeven
Raj Manimaran
Zahra Mansoor
Jasmine Marshall
Amanda Mastronardi
Allyson Maurin
Lauren May
Juliet Mbaluka
Allison McCarthy
Coleen McGough
Brittany McLarney
Madison McNulty
Samarth Medakkar
Elizabeth Miles
Mohammed Mirza
Divya Mohanraj
Pauline Mole
Megan Morici
Samantha Mosko
Connor Mostek
Phoebe Mullen
Ari Mushnick
Chaitu Natarajan
Samyuktha Natarajan
Harshita Nedunuri
Elisa Neira
Brooke Neidermaier
Taylor Neidermaier
Haley Oberg
Amal Oladuja
Ambika Paulson
Jordan Peebles
Matt Petz

Annie Portner
Sam Portner
Matt Porter
Jessica Postorivo
Alex Pozza
Mary Robins
Nikhil Roy
Nikita Roy
Emily Russo
Gaby Russo
Aarcha Sagar
Abhinav Saikia
Lizzy Satz
Robin Schilling
Samantha Shute
Sheryl Sinacore
Liz Slocum
Alexa Sobieski
Samantha Stepnowski
Penny Sun
Gina Telymonde
Sarathi Tuli
Kiran Vaidya
Anu Vedantham
Lauren Wachspres
Abrianna Wallace
Christina Webster
Daniel Webster
Joanna Wedell
Christine Wolf

VOLUNTEERS

We are appreciative of the invaluable support we receive throughout the year from volunteers supporting our mission, including the following volunteer groups: Campbell's Make A Difference Volunteers, Comcast Cares Day Volunteers, Operation Backpack Volunteers, Holiday Gift Project Volunteers.

IN MEMORY OF

IN MEMORY OF
SHELDON ALBERT
Anonymous

IN MEMORY OF
ANNE GIORDANO
Margaret Giordano

IN MEMORY OF
STEVE KRIER
Ann-Linn Glaser

IN MEMORY OF JOHN
MURPHY
Sue & Guy Johnson

IN MEMORY OF
PETER MUSUMECI, SR.
George Boppel
Dot & Charles Bunting
Nedda & Michael Cashore
DuPont Veteranettes
Samantha Shute
Katharyne & Charles Jansky
Hazel Marinelli
Adrienne & Anthony Musumeci
Loretta & Samuel Musumeci
Mary LaRosa Musumeci
Rose Musumeci
Sarah Musumeci
Jo Ann & Louis Pantalone
Kay Marie Platt
Mary Previtara
Robert & Mary Provencher
Daniel & Lillian Ragone
Harvey Rovinsky
Peter Sciotto
Alfina Smith
Richard & Gerrie Stagliano
Roasemarie Weiss

IN MEMORY OF
BERTHA VOGT
Linda & Bob Vogt

We gratefully acknowledge those donors who wish to remain anonymous. We apologize for the oversight if your name is not listed or if your name is misspelled. In either case, please contact our office at 856.964.1990 x129 so we can correct the error.

CFS MEMBERSHIPS

ALLIANCE FOR CHILDREN AND FAMILIES

FAMILY SERVICE ASSOCIATION OF NEW JERSEY

UNITED WAY OF CAMDEN COUNTY

UNITED WAY OF GLOUCESTER COUNTY

NEW JERSEY ASSOCIATION OF MENTAL HEALTH & ADDICTIONS AGENCIES

NATIONAL COUNCIL FOR COMMUNITY BEHAVIORAL HEALTHCARE

NEW JERSEY ALLIANCE FOR CHILDREN AND FAMILIES

NEW JERSEY COALITION AGAINST SEXUAL ASSAULT

NATIONAL NETWORK FOR YOUTH

ASSOCIATION FOR CHILDREN OF NEW JERSEY

FAMILY RESOURCE COALITION

SOUTHERN NEW JERSEY ADDICTIONS PROVIDERS COALITION

NEW JERSEY COALITION FOR BATTERED WOMEN

HOUSING AND COMMUNITY DEVELOPMENT NETWORK OF NEW JERSEY



Changing the odds for children and families by providing vision, hope, and strength for a better life through prevention, intervention, and education.



584 Benson Street • Camden, NJ 08103

Non-Profit Org.
U.S. POSTAGE
PAID
Bellmawr, NJ
Permit No. 584

Vision, Hope, and Strength for a Better Life
www.centerffs.org

Locations

ADMINISTRATIVE OFFICES

584 Benson Street
Camden, NJ 08103
856.964.1990 Fax: 856.964.0242

601 Black Horse Pike
Williamstown, NJ 08094
856.728.0404 Fax: 856.728.1407

COUNSELING OFFICES

560/584 Benson Street
Camden, NJ

108 Somerdale Road
Voorhees, NJ

601 South Black Horse Pike
Williamstown, NJ

Lynn's House
594 Benson Street
Camden, NJ

250 S. Delsea Drive
Glassboro, NJ

180 Whitehorse Pike
Clementon, NJ

Peter M. Musumeci, Jr. and Linda M.
Musumeci Family Sanctuary at Center
For Family Services
17 South Delsea Drive
Glassboro, NJ

3642 Landis Avenue
Vineland, NJ

SHELTER AND RESIDENTIAL TREATMENT FACILITIES

HomeBase, GrandSlam, Camden
Group Home, IMANI Partial Care
Program, and Camden DREAMS
Camden, NJ

Cumberland County Domestic
Violence Safe House
Cumberland County, NJ

FAITH
Laurel Springs, NJ

Gloucester County
Domestic Violence Safe House
Gloucester County, NJ

Mother/Child Residential
Woodbury, NJ

OASIS Youth Services Program of
Cape May County, and Tranquility
House
Cape May, NJ

Together Youth Shelter
Glassboro, NJ

YES Shelter and Residential Facility
Blackwood, NJ

24 HOUR, REGIONAL, AND STATEWIDE HOTLINES

Family Health Line
1.800.328.3838

First Call For Help
1.800.648.0132

Women's Referral Central
1.800.322.8092

SOS Teen Helpline
1.800.355.0660

Domestic Violence and Sexual
Violence Crisis Hotlines
Camden: 1.866.295.7378
Cumberland County: 1.800.225.0196
Gloucester County: 1.866.295.7378